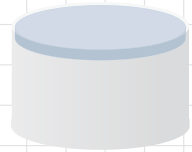


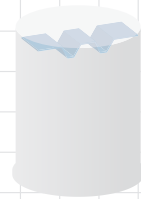
IR REACTOR

Econvert-IR® The high performer. Designed to create the ideal process conditions. The two-stage settling system enables internal recirculation. Due to this high COD concentrations can be treated and optimum biological conditions are secured.



Econvert UASB®

- > Footprint: LARGE
- > Height: < 8 m
- > Loading rate: < 15 (kg COD/m³/d)
- > Upflow velocity: Low



Econvert EGSB®

- > Footprint: MODERATE
- > Height: > 10 m
- > Loading rate: < 25 (kg COD/m³/d)
- > Upflow velocity: Moderate



Econvert IR®

- > Footprint: SMALL
- > Height: > 20 m
- > Loading rate: < 35 (kg COD/m³/d)
- > Upflow velocity: High

Functionality

- > Internal and external recirculation provide optimum dilution
- > Patented mixing chambers avoid overloading of the bacteria
- > Better influent distribution through the patented influent system
- > Heavy sludge discharge points to prevent clogging
- > Polishing section between the upper and lower settling stage
- > Able to deal with high calcium concentrations
- > Available both as open top or completely gas-tight

Specifications

- > Bolted tank \varnothing 8 x 24m
- > 30 Ton COD/day
- > Expansion anaerobic treatment capacity
- > Including biogas buffer, flare extension and optimization aerobic stage



Stora Enso Narew Sp. Z.o.o., Ostrołęka, Poland:
'With the Econvert-IR® we've not just got a reactor, we have got a solution to our wastewater problem. It's reliable and performs beyond expectations.'